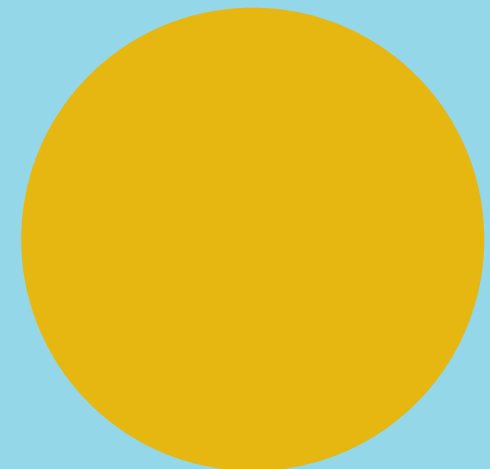

Discover
something new
in Drury



DISCOVER DRURY

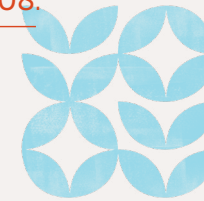
Contents

03.



The Future of
Communities

08.



The Kiwi
Dream Realised

11.



The
Infrastructure

14.



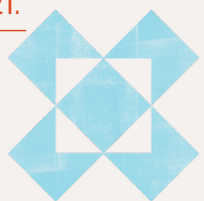
Drury
Town Centre

19.



Family &
Community

21.



Resident
Testimonials

24.



Behind the
Scenes

26.



Come &
Explore



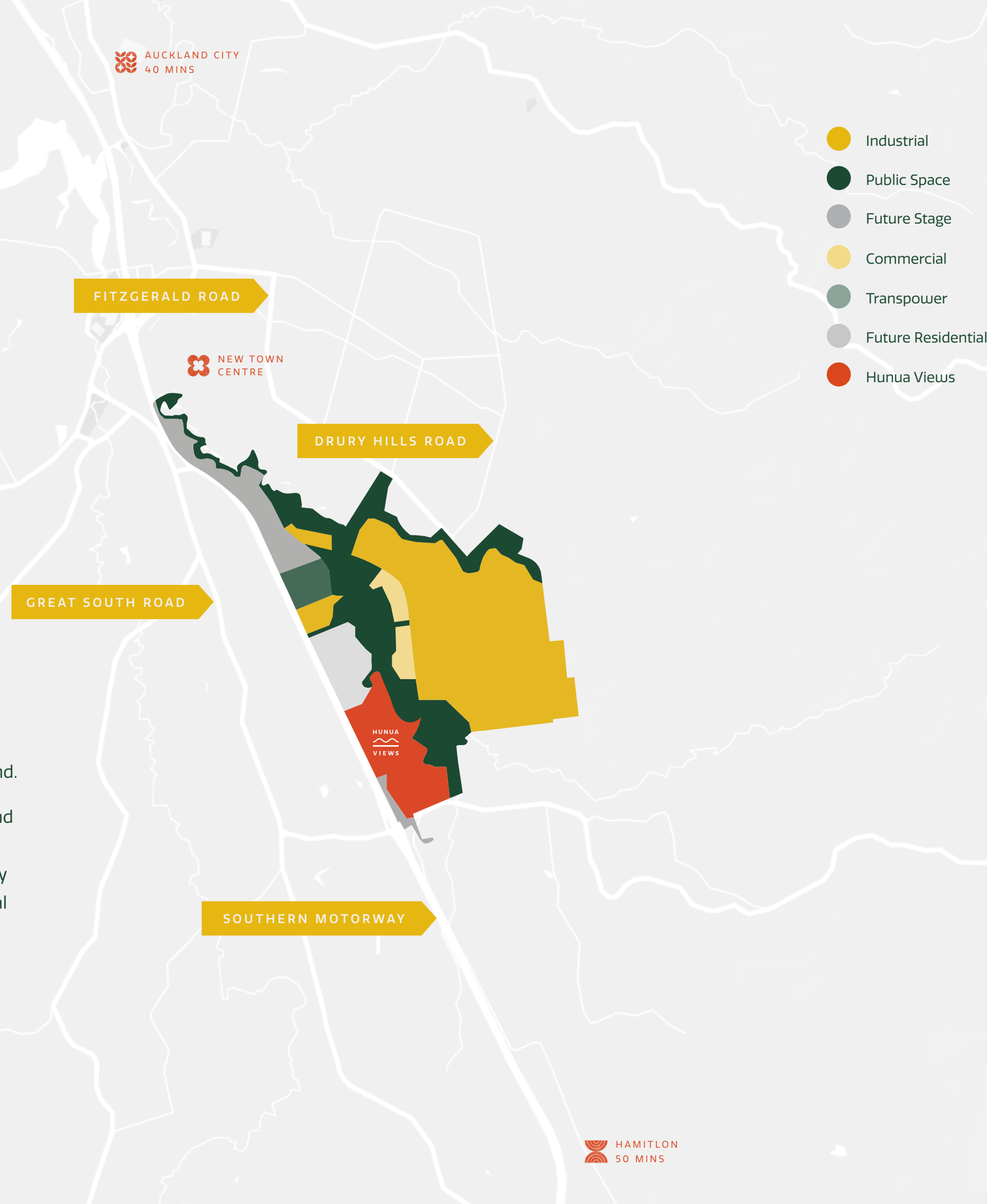
HUNUA VIEWS

The **future** of
new communities
in New Zealand is
right here.

Drury is evolving

Think you know Drury? Think again. It's time to rediscover this evolving part of Auckland, set to become a thriving metropolis south of Auckland.

With a brand new town center being designed and delivered by Kiwi Property Group, a 361 hectare business hub in the late stages of development by Drury South Crossing, and a brand new residential development, Hunua Views, being delivered by Classic Developments – this is a place where you can live, work, shop, relax and play – and a place you'll love to call home.



Hunua Views is a leafy new address in Ramarama, on the border of Drury, that gives a nod to those elusive neighbourhoods you dream of but seem so out of reach. The kind of place where kids find friends down the street, where you have your neighbours over for a BBQ and where your friends still can't quite believe you got the house you did for the price you paid.

THE FUTURE OF COMMUNITIES

This brand new community draws inspiration from it's natural history, with wetlands and streams, extensive native plantings and expansive greenspaces and walkways woven throughout. Hunua Views offers an escape from city congestion while remaining handy to everything you love about Auckland.

With residents starting to populate the suburb from the end of 2020, a community has now formed and will continue to grow through until 2024. Founding residents are already enjoying the benefits of living in a well-thought-out and carefully planned development.

This information brochure will share their experiences and everything you need to know about moving into the suburb best placed to enjoy the benefits of Auckland and the Waikato.







THE KIWI DREAM REALISED

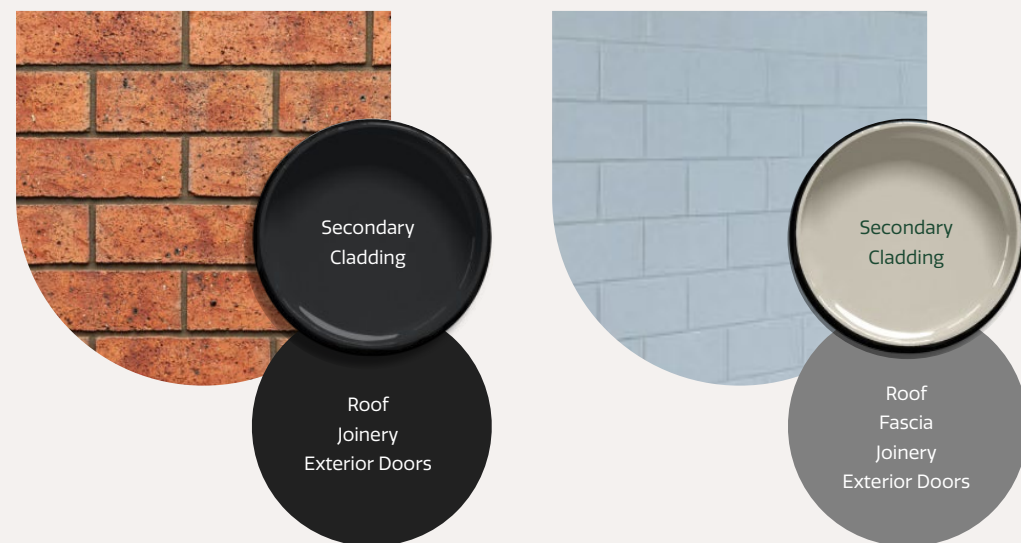
Hunua Views homes are generally either two, three or four-bedroom configurations and have been carefully planned to ensure functional, easy living – without compromising on quality or aesthetics.

Drawing on materials that complement Mother Nature and enhance the surrounding environment, Hunua Views' homes are secure and sleek with beautiful finishings. They're built to stand the test of time.

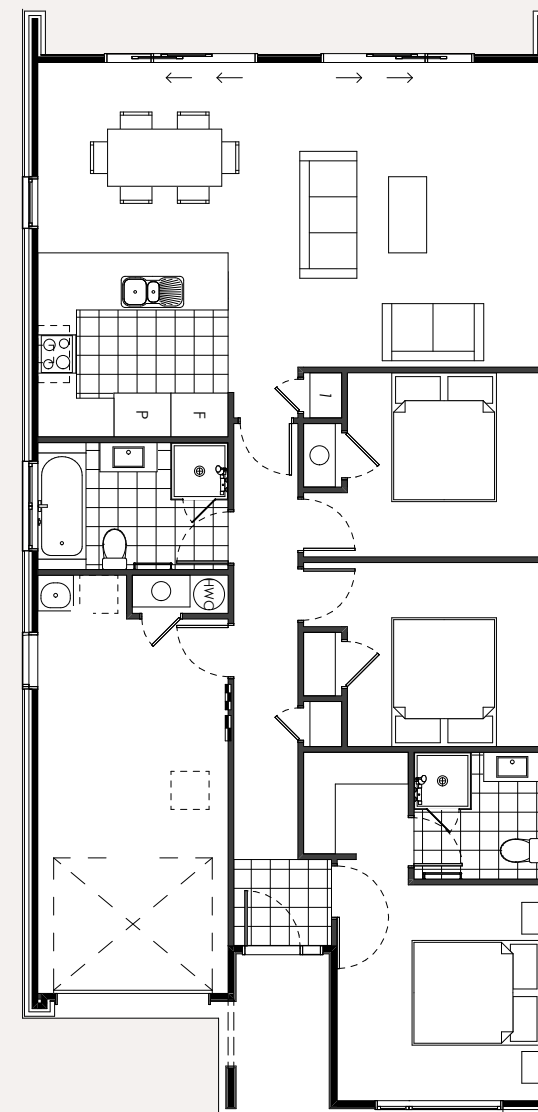
We know how Kiwi's like to live, and that's in independent, standalone homes with a backyard. This is how we have designed Hunua Views. You can have your cake and eat it to, in a home of your own with space to move and room to breathe.



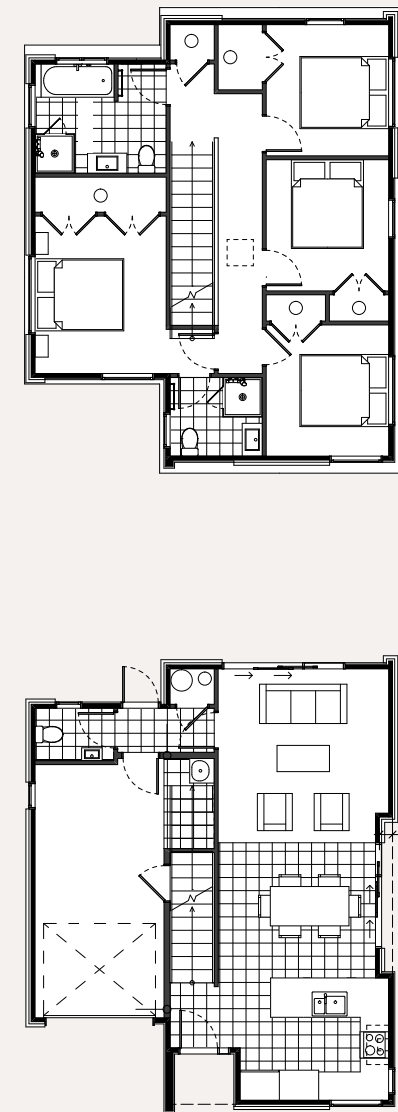
Exterior Colour Palette and Floorplan Examples...



Example Single Storey Floorplan



Example Two Storey Floorplan





INFASTRUCTURE

A great benefit of living in a new development is careful planning to allow for significant weather events, without causing damage to people or property.

As observed recently around the country, newer developments manage this excess water better than older, existing ones. With sophisticated underground infrastructure and geotechnical planning, homes in new developments live up to a much higher standard for safety.





WETLANDS

INTENDED FLOOD LINE

RAIN GARDENS

COMMUNAL STORMWATER

SCRUFFY DOMES

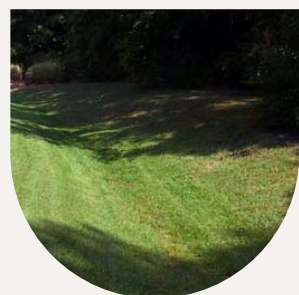
SWALES

Some of the stormwater features you'll see in and around Hunua Views...



Rain Gardens

At first glance, raingardens may look like a regular garden bed, but they're actually a complex and clever piece of infrastructure designed to direct and slow stormwater, and improve the health of our waterways. There are various types of raingardens within Hunua Views that all contribute to stormwater treatment and management.



Swales

Swales are broad, grass channels used to treat stormwater runoff. They direct and slow stormwater across grass and through the soil. Swales also help filter sediments, nutrients and contaminants from incoming stormwater before discharging to downstream stormwater systems or waterways.



Scruffy Domes

On the southern boundary, two enormous scruffy domes have been installed which pick up any water that might come off the bordering property and divert it to the Roslin Stream.



Wetlands

Extensive wetlands hold back some of the flood waters and slow the rate that water re-enters the stream channel to reduce the severity of downstream flooding and erosion.



Communal Stormwater

Communal stormwater devices and flood basins are designed to hold water and reduce flow rate, easing pressure on stormwater systems and downstream volumes during storm events. These areas are designed to flood so that homes don't.

DRURY TOWN CENTRE

One of Auckland largest upcoming developments has been given the thumbs up and will be led by Sylvia Park owners Kiwi Property.

Earthworks have begun the 51ha Drury Town Centre project, a green star community that will include retail, open spaces and public assets such as a town hall and libraries.

The town centre is the first step in a wider development for the area which will see 60,000 people moving in over two decades.

Hunua Views is located just 8 minutes from the future town centre which will provide amenity and job opportunities.





There will be cafes and eateries...



Lots of amenities and job opportunities...



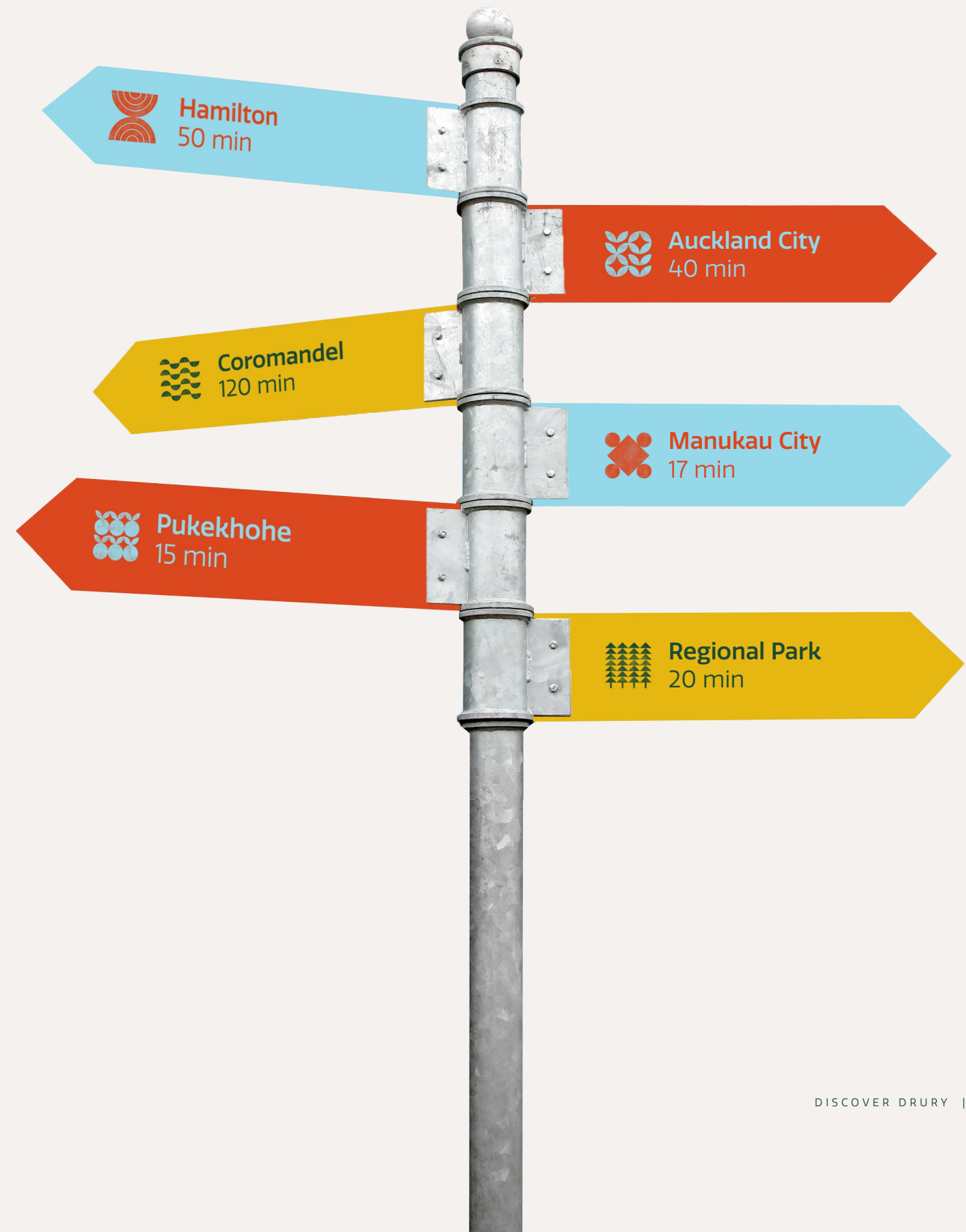
As well as a library and its very own town hall.

“Drury is expected to become home to around 60,000 people in the next 30 years, providing a unique opportunity to build a city from the ground up. Kiwi Property’s site in Drury will be the location for the future town centre and a nexus for development in the area over the coming decades.”

Ian Passau, General Management of Development

WELL CONNECTED

Hunua Views is perfectly positioned for Auckland and Hamilton, with a quick escape to the Coromandel and Bay of Plenty for weekend adventures. And the area will have everything you need nearby in a very short time...



WELL CONNECTED

**You may be concerned about traffic!
It is an issue wherever you live in
Auckland and The Government's
New Zealand Upgrade Programme is
funding three new train stations for
southern Auckland.**

The new stations, two at Drury and one in Paerata, will include bus interchange and park-and-ride facilities and allow for connecting walking and cycle paths.

Combined with the extension of electrification from Papakura to Pukekohe, this project will make travelling by train more accessible and appealing to those living and/or working in the area. Subject to planning approvals, we can expect all three to be completed by 2025.



FAMILY & COMMUNITY

Family life at the heart of the community. Day cares and schools are usually the busiest hub of a community where new friendships are formed.





Under Fives

Hunua Views has a stunning new early education centre called New Shoots. With luscious wetlands, streams, and walkways close by, New Shoots Ramarama children's centre is a wondrous place for your child to learn, naturally. From nourishing food, responsive teachers, and sustainable resources to the calming colour palette, everything supports your tamariki on their path of genuine and joyful self-discovery.

Designed and built alongside architects, spatial designers, engineers, landscape architects and early childhood professionals, New Shoots Ramarama is one of a kind. A commitment to a sustainable future means all materials, interiors, and furniture were selected with an understanding of their impact on a child's well-being and the environment.



Primary Years

Ramarama Primary School is the closest school for the 5-10-year-old residents. With the country atmosphere and nine classrooms, the school provides lots of space, including sports courts, fields, playgrounds, and a swimming pool. The school motto aligns perfectly with Classic Developments, Growing successful futures together.



Secondary Years

Hunua Views is poised to provide some great options for secondary learning including public, private and religious options. In-zone schools include Rosehill College, the illustrious ACG Strathallan and the soon-to-be-completed St Ignatius of Loyola Catholic College.

A LOT TO LOVE

The best way to discover what a neighbourhood has going for it, is to ask the people who live there so we saved you the trouble and asked for you. Here is what they said...





"The view is great for one, looking on to rolling hills is pretty special."



"Our neighbours are so friendly".



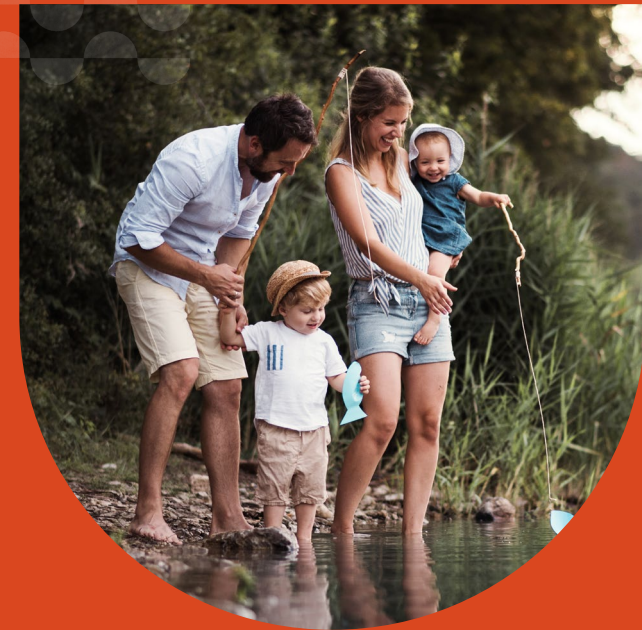
"It's a pretty great opportunity for the kids to be able to have access to this type of environment."



"being smack bang between Auckland and Hamilton is so handy for visiting friends and family"



"We made the move before the rest of Auckland catches on with what's in store for Drury".



"We can lock up and leave so easily, the best of the North Island is right on our doorstep".

BEHIND THE SCENES

Hunua Views is being developed by Classic Developments, part of the Classic Group of companies which is a collection of New Zealand owned and operated brands with a common goal: To build a better world to live in.

Classic Developments is one of Aotearoa's largest end-to-end property developers, delivering large-scale residential, commercial and industrial projects across the country.



BEHIND THE SCENES

For more than 25 years we've specialised in the acquisition, development, and management of land opportunities — creating both highly functional & aesthetically unique spaces that stand the test of time.

We bring a fresh, strategic and empathy-driven approach to property development. Because it's not just about quality outcomes. It's about integrity, and the experience our partners have with us throughout the journey. It's about creative design, whip-smart innovation, and accountability for the standard of excellence we expect from ourselves and those around us. And it's about the people we're doing all of this for in the first place — the individuals, families, and businesses who'll be part of our future communities.



**It ends with them, but
it all starts here.**





COME & EXPLORE

We'd love the opportunity to show you around our evolving community. Our Showhome Village is home to our family of build partners who represent some of New Zealand's best and most trusted builders.

Through them you'll be able to view a wide selection of House & Land Packages to find your perfect home at the right price.



Classic Builders

P 09 905 4637

E info.alksouth@classicbuilders.co.nz



Navigation Homes

P 0800 303 207

E counties@navigationhomes.co.nz



Generation Homes

P 021 223 3263

E seanb@generation.co.nz

G.J. Gardner. HOMES

GJ Gardner Homes

P 0800 777 652

E papakura_sales@gigardner.co.nz



Frame Homes

P 027 459 5406

E sales@framehomes.co.nz

