

# The heart of Drury's growth

Find your place in a location that's only  
getting better.





The **future** of  
new communities  
in New Zealand  
is right here.



## Come for the home, stay for the community.

**Welcome to Hunua Views — the kind of community you've been waiting for.**

Hunua Views is one of those rare neighbourhoods that actually lives up to the dream. The kind of place where kids find friends down the street, where you have your neighbours over for a BBQ and where your friends still can't quite believe you got the house you did for the price you paid. Natural wetlands and walkways are woven throughout with open green spaces and family-friendly terrain made for weekend adventures.

With House and Land Packages selling now and development entering into its final chapters, your chance to call Hunua Views home won't last long!





Hunua Views sits at the centre of one of Auckland's fastest-growing regions, just 40 mins from the city.

Massive investment in the area, including the proposed Drury South motorway interchange, and two new train stations, is set to make commuting even easier and everyday life more connected.

With the future Drury Town Centre taking shape just minutes away, you'll be part of a thriving new hub with shopping, schooling, and transport all at your fingertips. Sound like your kinda neighbourhood?





# Big things are happening in **Drury.**

There's a reason Drury is getting so much attention. With major investment pouring into new infrastructure, this once-sleepy town is fast becoming a thriving hub at the southern edge of Auckland.





## Better **connected** than ever

Whether you're heading to work, the beach, or off to see whānau, the south's transport upgrades are making everyday travel simpler.

Three brand-new train stations are on the way — Drury Central, Drury West, and Paerata — complete with park-and-rides, safe walking and cycling paths, and easy bus connections. The rail line from Papakura to Pukekohe is now fully electrified too, making trips cleaner, quieter and faster.

Living here puts you right in the middle of it all — with Auckland, Hamilton and Tauranga (the country's Golden Triangle of jobs, logistics and growth) all within easy reach.



## **Growth** that's here to stay

The population in and around Drury is set to soar over the next 30 years, as Auckland's south continues to grow. That means more homes, more schools, more parks, and more opportunity — all while staying connected to what matters most.

It also means now is the perfect time to get in early. With big changes on the horizon, buying at Hunua Views today puts you ahead of the curve — with the confidence of knowing you're part of a community that's only going up.



## A **new** town centre on the way

Right now, work is underway on a brand new Drury Town Centre, with supermarkets, retail, eateries, a central plaza, civic spaces, and modern office spaces all in the plan. Earthworks are already in motion, with construction kicking off later this year.

Just five minutes from Hunua Views, it's the kind of long-term investment that gives buyers real confidence in building a future here.



# Schooling and Education on your doorstep.

Family life at the heart of the community. Daycares and schools are usually the busiest hub of a community where new friendships are formed.

## Under Fives

Hunua Views is home to the beautifully designed New Shoots Ramarama early learning centre – a one-of-a-kind space created with tamariki in mind. With wetlands and walkways nearby, it's a natural, nurturing place for kids to learn and grow. Thoughtfully built using sustainable materials, every detail supports wellbeing, play, and joyful discovery.

## Primary Years

Ramarama School is the local primary school, catering for New Entrants through to Year 8. It is just a short walk from Hunua Views via a leafy shared pathway. With its country atmosphere, ten classrooms, and plenty of room to run and play, the school offers sports courts, fields, playgrounds, and even a swimming pool – making it a great place for children to enjoy learning.

## Secondary Years

Hunua Views offers great options for secondary learning, including public, private, and faith-based schools. In-zone choices include Rosehill College, the highly regarded ACG Strathallan, and the newly opened St Ignatius of Loyola Catholic College – giving families a strong range of options for their tamariki's education.





# HUNUA VIEWS





# A location that truly has it all

With great prices, a prime location, and beautiful new homes delivered by some of New Zealand's leading build partners, Hunua Views has everything you need to make your next move a smart one.



5 mins to future Drury Railway Station (coming soon)



Easy motorway access



90ha of public open space



24km of walking & cycling paths



5 mins to Drury Town Centre (coming soon)



Schools sorted from Daycare to College



Foodstuffs supermarket (coming soon)









Hunua Views homes are generally either two, three or four-bedroom configurations and have been carefully planned to ensure functional, easy living – without compromising on quality or aesthetics.

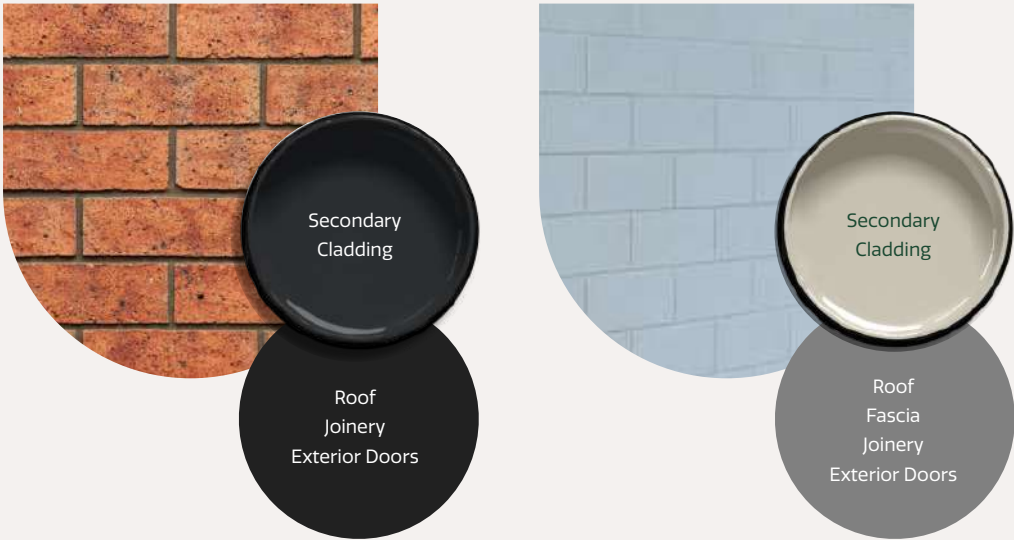
Drawing on materials that complement Mother Nature and enhance the surrounding environment, Hunua Views' homes are secure and sleek with beautiful finishings. They're built to stand the test of time.

We know how Kiwis like to live – with a bit of privacy, some outdoor space, and a place that feels like home. That's what we've created at Hunua Views. Smart layouts, modern design, and room to breathe – without stretching the budget.

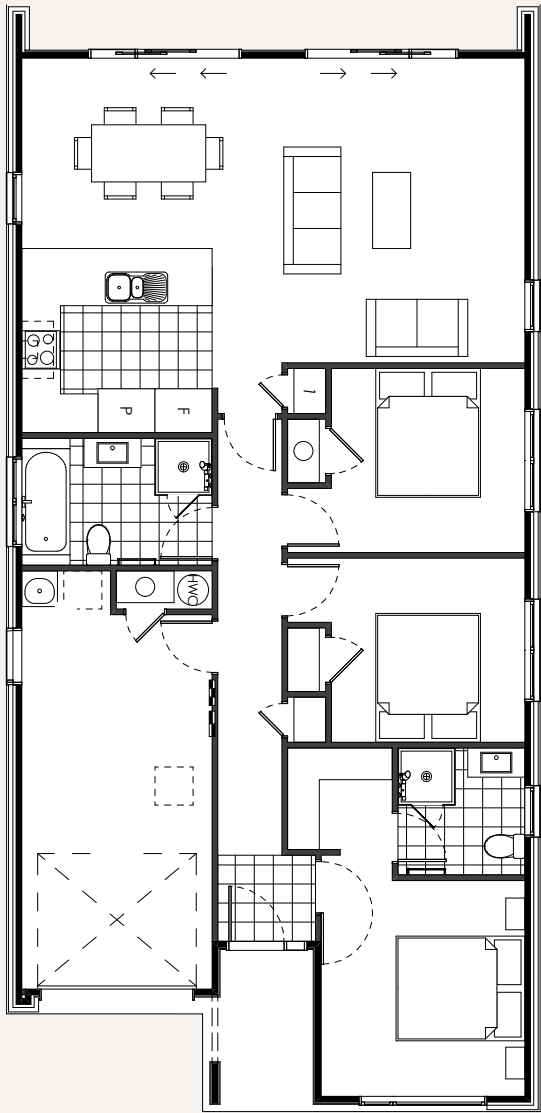




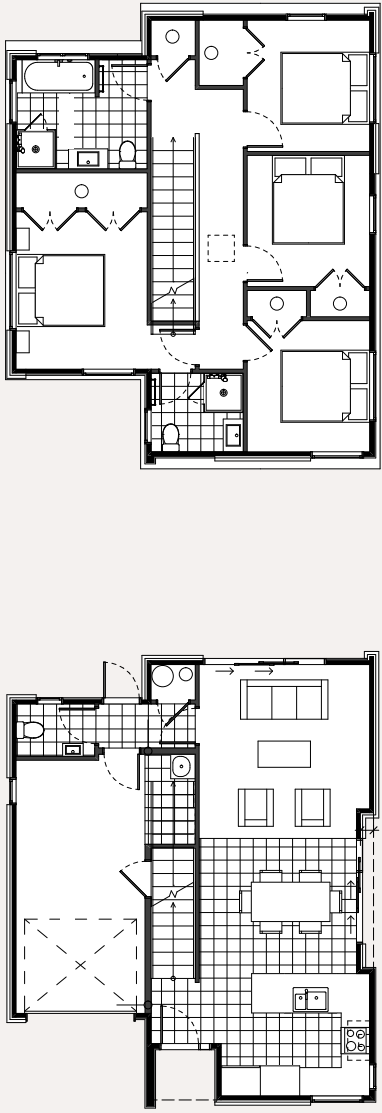
# Exterior Colour Palette and Floorplan Examples...



Example Single Storey Floorplan



Example Two Storey Floorplan





A great benefit of living in a new development is careful planning to allow for significant weather events, without causing damage to people or property.

Newer developments manage excess water better than older, existing ones. With sophisticated underground infrastructure and geotechnical planning, homes in new developments live up to a much higher standard for safety.



# Some of the **stormwater features** you'll see in and around Hunua Views...



### Rain Gardens

At first glance, raingardens may look like a regular garden bed, but they're actually a complex and clever piece of infrastructure designed to direct and slow stormwater, and improve the health of our waterways. There are various types of raingardens within Hunua Views that all contribute to stormwater treatment and management.



### Swales

Swales are broad, grass channels used to treat stormwater runoff. They direct and slow stormwater across grass and through the soil. Swales also help filter sediments, nutrients and contaminants from incoming stormwater before discharging to downstream stormwater systems or waterways.



### Scruffy Domes

On the southern boundary, two enormous scruffy domes have been installed which pick up any water that might come off the bordering property and divert it to the Roslin Stream.



### Wetlands

Extensive wetlands hold back some of the flood waters and slow the rate that water re-enters the stream channel to reduce the severity of downstream flooding and erosion.



### Communal Stormwater

Communal stormwater devices and flood basins are designed to hold water and reduce flow rate, easing pressure on stormwater systems and downstream volumes during storm events. These areas are designed to flood so that homes don't.



"We wanted something affordable, but still close to the city. Hunua Views ticked all the boxes – great location, safe community, and plenty of green space."



Sam & Talia

"Huna Views just felt like the right move. We got to build something new, and we love being so close to nature while staying connected to everything."



Priya

"We were surprised how affordable it was for the location. Being close to the future town centre and still having green space for the kids made it an easy choice"



Aria & James



# Sales Information

We've partnered with some of Auckland's most respected and experienced builders to offer a wide range of House and Land Packages at Hunua Views.

To enquire, visit [hunuaviews.co.nz](https://hunuaviews.co.nz) or contact a Build Partner directly.



**Classic Builders**

**P** 09 905 4637

**E** [info.alksouth@classicbuilders.co.nz](mailto:info.alksouth@classicbuilders.co.nz)



**Navigation Homes**

**P** 0800 303 207

**E** [counties@navigationhomes.co.nz](mailto:counties@navigationhomes.co.nz)



**Generation Homes**

**P** 021 988 093

**E** [wayner@generation.co.nz](mailto:wayner@generation.co.nz)

**G.J. Gardner. HOMES**

**GJ Gardner Homes**

**P** 09 296 1695

**E** [papakura\\_sales@gjgardner.co.nz](mailto:papakura_sales@gjgardner.co.nz)



**Frame Homes**

**P** 027 438 8722

**E** [sales@framehomes.co.nz](mailto:sales@framehomes.co.nz)



**Indelible Homes**

**P** 027 698 2855

**E** [claudio@indeliblehomes.co.nz](mailto:claudio@indeliblehomes.co.nz)



Hunua Views is being developed by Classic Developments, part of the Classic Group of companies which is a collection of New Zealand owned and operated brands with a common goal – To build a better world to live in.

Classic Developments is one of Aotearoa's largest end-to-end property developers, delivering large-scale residential, commercial and industrial projects across the country.







HUNUA  
VIEWS

